

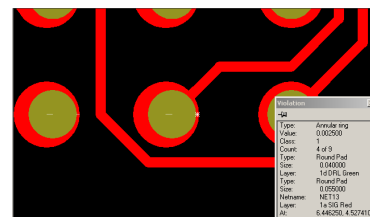
IGI CheckMate evaluates your data according to your DFF specifications. Clear up design defects prior to manufacturing.

CheckMate is a complete and affordable package enabling the designer to check for DFF defects which can be fixed on the design end. Although defect-checking may be an inconvenient necessity, using CheckMate can help you reach your DFX goals!

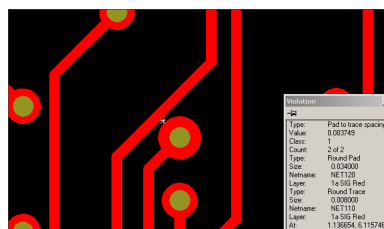
Verify your design, according to your own specifications, running only the checks you need. Quick and easy read-in and reliable verification with graphical reports make this the designer's best friend. Smooth the way from design to manufacturing with CheckMate's quality data analysis.

### Innovative Features

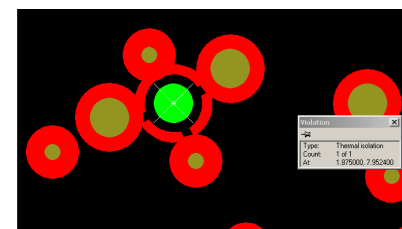
- Easy drag and drop input.
- Show problem areas with a single click.
- Automatic DFF verification for a wide range of checks.
- DFF for non-traditional PCB designs produced in AutoCAD
- Review defects in the design system.
- Flexible settings for DFF specifications.
- Snapshot reports for clear communication of design issues.
- Operational analysis and customization available.



Annular Ring



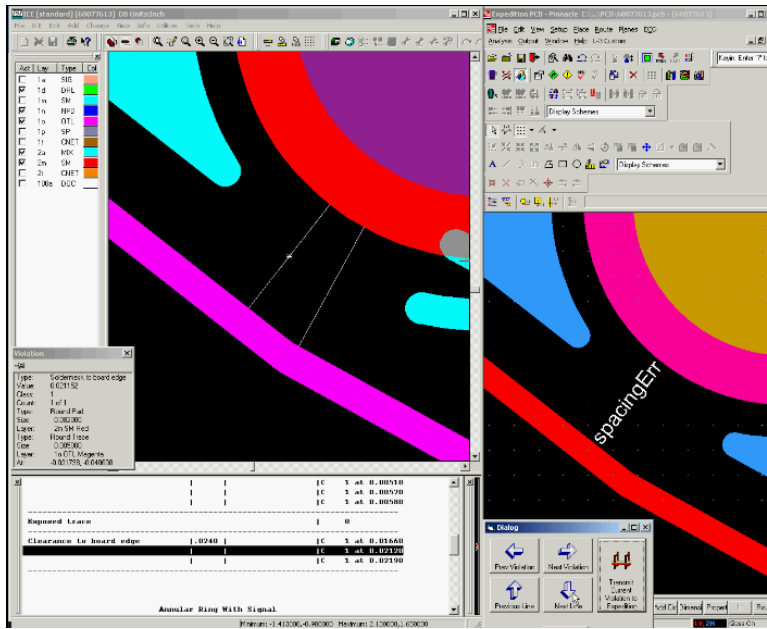
Pad to Trace



Thermal Isolation

# Data Analysis and Diagnosis

CheckMate produces a full complement of reports. From a basic summary of the job data to graphic displays of DFF spec violations, CheckMate shows you defect areas.



Easy navigation through rule violations with CheckMate.

Review violations in ICE or in the design system.

## Simple – Effective – Flexible

CheckMate makes it easy to select which checks to run, adjust values, or run a standard set of checks. You have extensive control over the automatic settings. You can retain spec sets for future use.

### Netlist Analysis

- Netlist Compare
- Plane Shorts Checking
- Easy netlist viewing

### Geometry Analysis

- Spacing, annular ring, slivers, minimum widths, spikes, specks, clearances, and trace termination.

### Analysis by Type

- Soldermask, drill, solderpaste, and silkscreen checks.
- Summary reports for layers, drills, and SMDs.

## Snapshot Reports

Take a snapshot of any design issue to clearly communicate with all stakeholders. Reports include graphics and text in a common HTML format for easy sharing.

INFINITE GRAPHICS						
Snapshots of job demo						
Type	Layer	Image	Hot's Eye	X-Location	Y-Location	Comment
DFF defect -- Spacing	1u SIG			5.963346	7.915746	Can this pad be shaved?
DFF -- Annular ring	1u SIG			6.246250	4.527400	Wd registration for this issue?
DFF defect -- Thermal Isolation	3u GND			1.875000	7.952400	Please adjust the pads and drills